



WH WENTECH HYDRAULIC
TRADING SDN BHD (435973-M)
AX HYDRAULIC SDN BHD (1094635-H)





JIC MALE/FEMALE 74° CONE SEAT
SAE J514 HOSE FITTING



1SN WIRE, 2SN WIRE, 1. & 2SN,
2SN SKIVE, OOF0 TEFLO, SAE100R7,
SAE100R8, R5, R13, FERRULE



JIS METRIC FEMALE 60° CONE SEAT
SWIVEL NUT (KOMATSU) HOSE FITTING



JIS BSP FEMALE 60° CONE SEAT
(TOYOTA) JIS B8363 SWIVEL NUT
HOSE FITTING



ORFS MALE/FEMALE &
DOUBLE HEX FLAT SEAT HOSE FITTING



VOLVO TEMPERATURE AIR
HOSE FITTING



M12 X 1.5, 1/4" INSERT
M12 X 1.5, 3/16" INSERT
VOLVO CABIN HOSE FITTING



BRAKE HOSE FITTING



M32(1.5) X 3/4" INSERT M40(1.5) X 1" INSERT

METRIC MALE WITH
O-RING GROOVE TRUCK HOSE FITTING



M22(1.5) X 1/4" INSERT

WASH CLEANER FEMALE
PLASTIC NUT HOSE FITTING



BSP/BSPT 60° CONE
HOSE FITTING



CO2 FIRE FIGHTING
HOSE FITTING



STRAIGHT, ELBOW & 45 DEGREE
SAE AIRCOND & 90° CONE
SEAT SWIVEL NUT HOSE FITTING



TRUCK HOSE FITTING



KOBELCO HOSE FITTING



WELDING & DOUBLE STRAIGHT
LIFE SAVER HOSE FITTING



STRAIGHT, ELBOW & 45 DEGREE
METRIC & INCH STANDPIPE HOSE FITTING



BSP MALE 60 DEGREE CONE
SEAT, SWIVEL & BULKHEAD HOSE FITTING



STRAIGHT, 90 DEGREE & 45 DEGREE
METRIC FEMALE 60° CONE MULTISEAL
SWIVEL NUT HOSE FITTING



STRAIGHT, 90 DEGREE & 45 DEGREE
METRIC FEMALE FLAT SEAT
HOSE FITTING



METRIC MALE & FEMALE 24° CONE
ISO 12151-2-DIN 3865 LIGHT & HEAVY
DUTY SWIVEL NUT **WITHOUT** O-RING
HOSE FITTING



METRIC MALE & FEMALE 24° CONE O-RING
ISO 12151-2-DIN 3865 (DKO-L/S)
LIGHT / HEAVY DUTY SWIVEL HOSE FITTING



METRIC/BSP/KOMATSU
BANJO HOSE FITTING



BSP, METRIC, SAE
MALE SWIVEL NUT HOSE FITTING



WATER BLASTING HOSE FITTING
(750 & 1100 BAR)



SAE FLANGE 3000 PSI CODE 61
SAE FLANGE 6000 PSI CODE 62
ISO 12151-3 SAE J516-J518 HOSE FITTING



10,000 PSI JACK HOSE FITTING



SAE 6K & 9K PSI FLANGE, BSP,
JIC & METRIC INTERLOCK HOSE FITTING



SAE FLANGE 9000 PSI
HEAVY DUTY HOSE FITTING



3K & 6K PSI CODE 61, 62
SAE FLANGE PLUG



SAE FLANGE 3K & 6K PSI
CODE 61 JIC MALE 74° CONE
ISO 12151-3-3-3AE J516



SAE SINGLE FLANGE CLAMP
SAE FLANGE 3000 PSI
CODE 61 ISO-12151-3-3-3AE J516



3000 PSI & 6000 PSI
SAE PIPE THREAD FLANGE
SAE SOCKET WELD FLANGE



SAE SPLIT
FLANGE HALVES PRESSURE
3K 6K 9K PSI



JIC MALE 7/4" CONE (SAE J514) ADAPTOR



JIS BSP MALE 60° CONE ADAPTOR



BSPT/BSP 60° CONE SEAT
(ISO 7-PT) (ISO 228-PF)
BSP FIXED FEMALE REDUCING BUSH



BSPT/BSP 60° CONE SEAT
(ISO 7-PT) (ISO 228-PF)
BSP FIXED FEMALE REDUCING BUSH



JIC MALE 7/4" CONE (SAE J514)



ORFS MALE & FEMALE (SAE J1453)



ORFS MALE & FEMALE (SAE J1453)



BSPT/BSP 60° CONE SEAT
(ISO 7-PT) (ISO 228-PF)
BSP FIXED FEMALE T-SOCKET



JIC MALE 74° CONE (SAE J514)
BSP MALE/FEMALE O-RING BOSS TYPE
(ISO 1179-3) LOCK NUT



JIC MALE 74° CONE (SAE J514)
UNF-UN MALE O-RING BOSS TYPE
(SAE J1926) LOCK NUT



JIC MALE / FEMALE 74° CONE (SAE J514)



90° ELBOW ADAPTER SWIVEL JOINTS



STRAIGHT & ELBOW METRIC & BSPT MALE
TRUCK ADAPTOR



KOMATSU METRIC MALE ADAPTOR



WATER GUN METRIC MALE & BSP
FIXED FEMALE ADAPTOR



KOBELCO METRIC 24 DEGREE CONE
SEAT MALE ADAPTOR



STAINLESS STEEL 316
TUBE FITTING WITH
DOUBLE FERRULES



HOLLOW ALLEN KEY PLUG & MALE PLUG
JIC/BSP/ORFS/JIS FEMALE CAP



STAINLESS STEEL 304 & 316
TUBE FITTING - DIN 2353 WITH
SINGLE FERRULES



STAINLESS STEEL 316 & HYDRAULIC
2 & 3 WAY BSP & NPT
HYDRAULIC BALL VALVE



GERMANY & USA
STAINLESS STEEL 304 80% HOSE CLIP



GALVANIZED & STAINLESS STEEL 304
WIDE BAND SUPER CLAMP



BITE TYPE TUBE FITTING FOR DIN 2353



ARGON WELDING FITTING



METRIC
BITE TYPE TUBE FITTING FOR DIN 2353



BONDED SEAL



JIC, METRIC, TUBING, FUEL PIPE
SLEEVE & NUT



ALUMINIUM & PP LIGHT
HEAVY DUTY PIPE CLAMP



ALLUMINIUM BSPT / NPT
CAMLOCK COUPLINGS



ALLUMINIUM BSPT REDUCER
CAMLOCK COUPLINGS



STAINLESS STEEL 316 BSPT / NPT
CAMLOCK COUPLINGS



CABLE	LENGTH	CABLE	LENGTH
1/8"	12"	3/16"	28"
1/8"	18"	1/4"	38 1/4"
1/8"	20 1/4"	3/8"	44"



POLYPROPYLENE BSPT
CAMLOCK COUPLINGS



BRASS BSPT / NPT
CAMLOCK COUPLINGS



CARBON STEEL
AIR HOSE COUPLING US TYPE



ALUMINIUM DIN 2817 SAFETY CLAMP
INTERLOCK HEAVY 2 & 4 BOLT CLAMP
CARBON STEEL DOUBLE BOLT CLAMP



CARBON STEEL
GROUND JOINT COUPLING



CAMLOCK & CROWFOOT
RUBBER GASKET



CARBON / STAINLESS STEEL KC NIPPLE
(BSPT / NPT) CARBON STEEL HOSE MENDER
ALUMINIUM PIN LUG (NPSM)



DOWTY COUPLING



KSG3-BK SCREW COUPLINGS
METRIC MALE 24° CONE SEAT
LIGHT / HEAVY DUTY



KSM PRESSURE RELIEF COUPLINGS



ISO 16028 INTERCHANGE
FLAT FACE QUICK COUPLING



Size: 1/4" & 3/8"

HIGH PRESSURE THREAD LOCKED TYPE
QUICK COUPLING
SERIES 3000, SCREW TYPE



ISO 7421 A SERIES
QUICK COUPLING



KSV WING THREAD LOCKED TYPE
QUICK COUPLING
SCREW TYPE

ZJ-LG

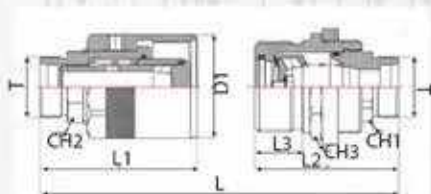
THREAD TYPE DRILLING EQUIPMENT HYDRAULIC QUICK COUPLING

FEATURES:

- It is perfect for hydraulic line connection, the connection can prevent the air into, and disconnected to prevent leakage.
- The sleeve locking mechanism is designed to prevent dirt get into inside of mechanism, because the dirt may cause mis-operation when connecting or disconnecting.
- Flat valve works when connecting or disconnecting.
- This means less fluid when disconnecting and little air sneak into coupling when reconnecting.

APPLICATIONS:

Zj-lg thread type drilling equipment hydraulic quick coupling series connection is suitable for the bad working condition and high frequency high voltage vibration. Widely used in pile driving machinery, special vehicles, drilling equipment.



PART NO.	L	L1	L2	L3	D1	CH1	CH2	CH3	T
ZJ-LG01-SP	104	63.5	54.5	17.5	50	36	22	36	M18 X 1.5
ZJ-LG02-SP	221	136	125	41.2	90	55	55	85	M52 X 2.0



RIVALIT

A brand of the Semperit Group

RIVALIT 1 SN



Nominal Ø		Inside Ø	Braid Ø	Outside Ø	Working pressure		Test pressure	Burst pressure	Bend radius	Weight
mm	inch	mm	mm	mm	bar	psi	bar	bar	mm	kg/m
6	1/4	6,6	10,9	13,0	225	3265	450	900	100	0,19
8	5/16	8,3	12,5	14,7	215	3120	430	860	115	0,22
10	3/8	9,9	14,8	16,8	180	2610	360	720	125	0,28
12	1/2	13,0	17,9	20,0	160	2320	320	640	180	0,36
16	5/8	16,4	21,0	23,2	130	1885	260	520	200	0,44
19	3/4	19,5	25,0	27,1	105	1525	210	420	240	0,56
25	1	26,0	32,9	35,1	88	1275	176	352	300	0,83
31	1-1/4	32,5	39,9	42,5	63	915	150	252	420	1,07
38	1-1/2	38,7	46,5	50,1	50	725	100	200	500	1,42
51	2	51,1	59,9	64,1	40	580	80	160	630	2,01

DIN EN 853 1 SN / SAE 100 R 15

Tube:

Synthetic rubber, resistant against hydraulic fluids

Reinforcement:

One braid of high tensile steel wire

Cover:

Abrasion and ozone resistant synthetic rubber. Note: various covers available

Temperature range (medium):

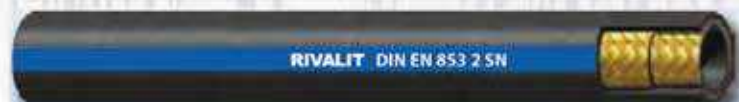
-40°C to 100°C (max 120°C intermittent)



RIVALIT

A brand of the Semperit Group

RIVALIT 2 SN



Nominal Ø		Inside Ø	Braid Ø	Outside Ø	Working pressure		Test pressure	Burst pressure	Bend radius	Weight
mm	inch	mm	mm	mm	bar	psi	bar	bar	mm	kg/m
6	1/4	6,6	12,4	14,4	400	5800	800	1600	100	0,31
8	5/16	8,3	14,0	16,0	350	5075	700	1400	115	0,37
10	3/8	9,9	16,4	18,4	330	4785	660	1320	125	0,44
12	1/2	13,0	19,4	21,4	275	4000	550	1100	180	0,53
16	5/8	16,4	22,6	24,6	250	3625	500	1000	200	0,66
19	3/4	19,5	26,6	28,6	215	3120	430	860	240	0,84
25	1	26,0	34,5	37,1	165	2395	325	660	300	1,23
31	1-1/4	32,5	43,9	46,7	125	1815	250	500	420	1,77
38	1-1/2	38,7	51,1	54,5	90	1305	180	360	500	2,17
51	2	51,1	62,9	66,7	80	1160	160	320	630	2,79

DIN EN 853 2 SN / SAE 100 R2S

Tube:

Synthetic rubber, resistant against hydraulic fluids

Reinforcement:

Two braids of high tensile steel wire

Cover:

Abrasion and ozone resistant synthetic rubber. Note: various covers available

Temperature range (medium):

-40 °C to 100 °C (max 120 °C intermittent)



RIVALIT

A brand of the Semperit Group

RIVALIT 4 SP



Nominal Ø		Inside Ø	Braid Ø	Outside Ø	Working pressure		Test pressure	Burst pressure	Bend radius	Weight
mm	inch	mm	mm	mm	bar	psi	bar	bar	mm	kg/m
10	3/8	9,9	17,4	21,1	445	6455	890	1780	180	0,70
12	1/2	13,0	20,6	24,2	425	6165	850	1700	230	0,85
16	5/8	16,4	24,2	27,9	350	5075	780	1560	250	1,04
19	3/4	19,5	27,9	32,0	350	5075	770	1540	300	1,32
25	1	26,0	35,1	38,9	320	4640	640	1280	340	2,06
31	1-1/4	32,5	45,9	50,5	210	3045	480	960	460	3,14
38	1-1/2	38,7	52,1	56,8	185	2685	420	840	560	3,61
51	2	51,1	65,4	70,2	165	2395	330	660	660	5,13

DIN EN 856 4 SP

Tube:

Synthetic rubber, resistant against hydraulic fluids

Reinforcement:

Four high tensile steel wire spiral layers

Cover:

Abrasion and ozone resistant synthetic rubber – MSHA approved. Note: various covers available

Temperature range (medium):

-40°C to 100°C (max 120°C intermittent)



RIVALIT

A brand of the Semperit Group

RIVALIT 4 SH



Nominal Ø	Inside Ø	Braid Ø	Outside Ø	Working pressure	Test pressure	Burst pressure	Bend radius	Weight		
mm	inch	mm	mm	bar	psi	bar	mm	kg/m		
19	3/4	19,5	28,3	31,9	420	6090	840	1680	280	1,43
25	1	26,0	35,4	38,7	380	5510	760	1520	340	2,20
31	1-1/4	32,5	42,3	45,2	350	5075	700	1380	460	2,58
38	1-1/2	38,7	49,2	53,4	290	4200	580	1160	560	3,30
51	2	51,1	63,2	67,3	250	3625	500	1000	700	4,94

DIN EN 856 4 SH

Tube:

Synthetic rubber, resistant against hydraulic fluids

Reinforcement:

Four high tensile steel wire spiral layers

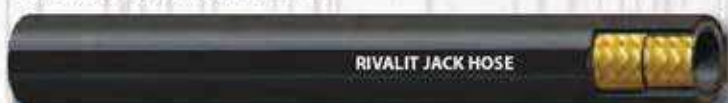
Cover:

Abrasion and ozone resistant synthetic rubber – MSHA approved. Note: various covers available

Temperature range (medium):

-40 °C to 100 °C (max 120 °C intermittent)

RIVALIT JACK HOSE



Nominal Ø	Inside Ø	Braid Ø	Outside Ø	Working pressure	Test pressure	Burst pressure	Bend radius	Weight		
mm	inch	mm	mm	bar	psi	bar	mm	kg/m		
6	1/4	6,4	12,7	15,0	690	10000	830	1380	100	0,30
10	3/8	9,5	16,7	19,0	690	10000	830	1380	130	0,50

RIVALIT JACK HOSE

Lining:

Oil resistant synthetic rubber

Reinforcement:

Two braids of high tensile steel wire.

Cover:

Abrasion and weather resistant synthetic rubber

Temperature range:

-40 °C to +100 °C depending on the medium

UNIVERSAL

TRACTOR

TRACTOR/1SN

INTEGRATED, RELIABLE HOSE ASSEMBLY



KEY FEATURES

• High performance, low pressure lines, return lines
 • Mineral oils, vegetable and rape seed oils, glycol and polyglycol based oils, synthetic ester based oils, oils in aqueous emulsion, water

APPLICATIONS & FLUIDS

- Hydraulics: low-medium pressure lines, return lines
- Mineral oils, vegetable and rape seed oils, glycol and polyglycol based oils, synthetic ester based oils, oils in aqueous emulsion, water

TECHNICAL DATA

PART NO.	HOSE DIA.		I.D.		O.D.		MAX P.		P.W.T.		WEIGHT		P.W.M.		HYDRON		
	DN	dash	inch	mm	inch	mm	inch	bar	psi	bar	psi	mm	inch	g/m	lb/ft	Std1	Std2
H01006000	5	-3	3/16"	9.5	9.97	11.5	0.45	250	3620	1000	14500	80	3.10	127	0.13	MF-MQ3400-03	OPF-03
H02004000	8	-4	1/4"	11.2	11.2	13.2	0.52	225	3280	600	8690	100	3.64	220	0.15	MF-MQ3400-04	OPF-04
H02001000	8	-6	3/8"	12.8	12.8	14.8	0.58	215	3110	650	9320	114	4.49	270	0.18	MF-MQ3400-05	OPF-05
H02002010	10	-6	3/8"	15.1	15.1	17.1	0.67	180	2610	720	10440	127	5.00	340	0.20	MF-MQ3400-06	OPF-06
H02002017	12	-8	1/2"	18.1	18.1	20.1	0.79	140	2020	640	9280	178	7.01	430	0.27	MF-MQ3400-08	OPF-08
H01008010	16	-10	5/8"	21.3	21.3	23.3	0.92	130	1880	620	8740	200	7.67	490	0.30	MF-MQ3400-10	OPF-10
H01006019	18	-12	3/4"	25.3	25.3	27.3	1.07	105	1520	420	6000	240	8.45	510	0.41	MF-MQ3400-12	OPF-12
H01006025	25	-18	1"	38.1	38.1	40.1	1.58	88	1270	350	5070	300	11.41	690	0.62	MF-MQ3400-15	OPF-15
H01008032	31	-20	1 1/8"	40.8	40.8	42.8	1.70	63	910	250	3520	415	16.50	1020	0.85	MF-MQ3400-20	OPK-20
H01008040	38	-24	1 1/2"	47.0	47.0	49.0	1.90	50	720	200	2900	500	19.60	1470	0.90	MF-MQ3400-24	OPK-24
H01008051	51	-32	2"	60.4	60.4	62.4	2.46	40	580	180	2500	600	26.80	2075	1.20	MF-MQ3400-30	OPK-30
H01008060	60	-38	2 3/8"	66.8	66.8	68.8	2.71	30	430	100	1400	650	25.30	2210	1.45	MF-MQ3400-35	

CONTINUOUS SERVICE TEMPERATURE

RANGE
 -43°F / -23°F
 -43°F / 100°C

MAX OPERATING TEMPERATURE

521°C, 250°F

TUBE

Oil resistant synthetic rubber

REINFORCEMENT

One high tensile steel braid

COVER

Environment resistant synthetic rubber

APPLICABLE SPECS

EN 853 1SN, SAE 100 R1AT, ISO 1408
 15K/R1AT

TYPE APPROVALS

MSHA, ABS, BV, DNV-GL, FRAS, NK, CQ-TR,
 KRS, LR



Remarks:

DN 5, 16, 18, 25, 31, 38, 51, 60 reference not to be used anymore on new projects: phase out planned.

TRACTOR/2SN

INTEGRATED, RELIABLE HOSE ASSEMBLY


HOSES

H1-2

KEY FEATURES

APPLICATIONS & FLUIDS

- Hydraulics: medium-high pressure lines
- Mineral oils, vegetable and rape seed oils, glycol and polyglycol based oils, synthetic ester based oils, oils in aqueous emulsion, water

TECHNICAL DATA

PART NO.	HOSE DIA.		ROD1		ROD2		MAX WP		BURST		MIN STRG		WEIGHT		FITTINGS		
	DN	dash	inch	mm	inch	mm	inch	bar	psi	bar	psi	mm	inch	g/m	lb/ft	Std1	Std2
R01027000	5	-3	2 9/16"	11.3	0.44	13.3	0.52	415	6010	1650	23900	89	3.50	315	0.21	MF-M03400-00	OPF-03
R01027006	6	-4	1 9/8"	15.7	0.60	14.7	0.58	400	5800	1900	27300	100	3.54	320	0.25	MF-M03400-04	OPF-04
R01027008	8	-5	5/8"	14.3	0.68	16.3	0.64	350	5070	1400	20000	114	4.49	410	0.28	MF-M03400-05	OPF-05
R01027010	10	-6	3/8"	18.7	0.68	18.7	0.74	330	4780	1320	19100	127	5.00	430	0.36	MF-M03400-06	OPF-06
R01027012	12	-8	1/2"	19.8	0.78	17.8	0.68	275	3880	1100	15900	128	7.01	620	0.42	MF-M03400-08	OPF-08
R01027016	16	-10	5/8"	23.0	0.91	25.0	0.93	250	3620	1000	14500	200	7.87	720	0.48	MF-M03400-10	OPF-10
R01027018	18	-12	3/4"	27.0	1.06	29.0	1.14	215	3110	850	12470	240	6.45	640	0.63	MF-M03400-12	OPF-12
R01027020	20	-16	1"	34.8	1.37	36.8	1.45	180	2590	680	9970	300	11.81	1090	0.87	MF-M03400-16	OPF-16
R01027030	31	-20	1 1/4"	44.3	1.74	47.0	1.85	135	1810	320	7260	415	16.50	1444	1.31	MF-M03400-20	OPK-20
R01027040	38	-24	1 1/2"	50.7	2.30	53.4	2.10	90	1300	380	6320	500	19.60	2250	1.51	MF-M03400-24	OPK-24
R01027050	41	-30	2"	60.5	2.40	66.2	2.61	80	1180	320	4940	630	24.80	2800	1.95	MF-M03400-32	OPK-32
R01027060	60	-38	2 3/8"	68.8	2.71	71.5	2.81	80	1200	350	5200	650	25.19	2700	1.81	MF-M03400-38	

CONTINUOUS SERVICE TEMPERATURE

RANGE
 -40 °F / 212 °F
 -40 °D / 100 °C

MAX OPERATING TEMPERATURE

221 °C / 250 °F

TUBE

Oil resistant synthetic rubber

REINFORCEMENT

Two high tenacity steel braids

COVER

Environment resistant synthetic rubber

APPLICABLE SPESCS

 EN 853 26R; SAE 100 R2AT; ISO 5458
 2619R2AT

TYPE APPROVALS

MSHA, ABS: SV; DIN-GL; CU-TR; KRS; NK-LR


Remarks:

DN 5, 16, 18, 25, 31, 38, 51, 60 references not to be used anymore on new projects phase out planned.

EXTREME

ROCKMASTER

ROCKMASTER/13

ABRASION, WEATHER & HEAT RESISTANCE



KEY FEATURES

- Excellent abrasion resistance
- Excellent weather and heat resistance
- Excellent performance in high pressure applications
- Excellent performance in high temperature applications

APPLICATIONS & FLUIDS

- Hydraulics; heavy duty power lines, hydrostatic transmissions, severe environmental conditions; specific installations with tough abrasion conditions, marine applications, underground and open pit mining
- Mineral oils, vegetable oils and synthetic ester based oils (up to 100°C/212°F), glycols and polyglycols, mineral oils in aqueous emulsion, water

TECHNICAL DATA

PART NO.	HOSE SIZE		ROD		O.D.		MAX W.P.		Burst		Min. Bend		Weight		FITTINGS		
	DN	dash	inch	mm	inch	mm	bar	psi	bar	psi	mm	inch	g/m	lb/ft	Std1	Std2	
H10000404*	8	-4	1/4"	14.8	0.7	17.0	0.08	600	1000	2500	47130	320	4.70	660	0.44		
H100003A10*	10	-6	3/8"	17.4	0.88	20.4	0.80	690	1000	2600	48080	350	5.81	830	0.50		
H100003A12*	12	-8	1/2"	21.6	0.88	24.4	0.90	620	1000	2600	56340	500	7.87	1140	0.77		
H100005019*	16	-12	3/4"	29.0	1.18	31.8	1.26	350	5070	1650	26200	240	0.45	1650	1.10	IP-M101500-12	SP-M105400-12
H100005026*	26	-18	1"	38.0	1.42	39.2	1.54	350	5070	1650	20900	300	11.81	2100	1.47	IP-M101500-16	SP-M105400-16
H100005029*	31	-20	1 1/8"	47.0	1.85	50.0	1.97	350	5070	1500	21750	400	18.54	3600	2.42	IP-M101600-20	SP-M105200-20
H100005040*	38	-24	1 1/2"	54.8	2.15	57.8	2.26	350	5070	1400	22200	500	19.69	4700	3.16	IP-M101400-24	SP-M105200-24
H100005061*	51	-32	2"	69.4	2.68	72.0	2.83	350	5070	1300	21750	600	24.80	5800	4.57	IP-M101800-32	SP-M105200-32

CONTINUOUS SERVICE TEMPERATURE

RANGE
-40°F / -20°F
-46°C / -121°C

MAX OPERATING TEMPERATURE

125°C / 257°F

TUBE

Oil resistant synthetic rubber

REINFORCEMENT

Four high tensile steel spirals (DN 6-26) & 4 high tensile steel spirals (DN 31-51)

COVER

Synthetic rubber with high ozone, weather and heat resistance

APPLICABLE SPECS

Flange: EN 566 M13; SAR 100 H13; ISO 1867 R13

TYPE APPROVALS

ARS, BV, DNV-GL, BV MED, FRAS, LR, CU-TR, MA, MSHA, HIMA, R

EXTREME

ROCKMASTER

ROCKMASTER/15

ABRASION, WEATHER & HEAT RESISTANCE



KEY FEATURES



APPLICATIONS & FLUIDS

- Hydraulics; heavy duty power lines, hydrostatic transmissions, in severe environmental conditions, specific installations with tough abrasion conditions, marine applications, underground and open pit mining
- Mineral oils, vegetable oils and synthetic ester based oils (up to 100°C/212°F), glycols and polyglycols, mineral oils in aqueous emulsion, water

TECHNICAL DATA

Part No.	HOSE SIZE		I.D. Ø		O.D. Ø		MAX. W.		W. PER		MIN. B.C.		SP. GR.		FITTINGS		
	DN	dash	inch	mm	inch	mm	bar	psi	bar	psi	mm	inch	g/m	lb/ft	Std1	Std2	
M10016016F	16	-12	3/4"	26.2	1.11	31.0	1.22	320	6030	1750	25380	265	50.43	1440	0.97	SP-401100-12	SP-4005460-12
M10016025F	25	-16	1"	25.1	1.38	36.1	1.50	420	8230	1750	25380	267	50.71	1540	1.37	SP-400100-16	SP-4005460-16
M15013A12F	31	-20	1 1/4"	46.3	1.82	46.5	1.85	420	8230	1690	24360	267	50.51	1490	2.46	SP-401100-20	SP-4005560-20
M10016016F	38	-24	1 1/2"	54.5	2.15	57.5	2.26	350	6880	1690	24360	215	42.40	1370	3.16	SP-401100-24	SP-4005560-24

CONTINUOUS SERVICE TEMPERATURE RANGE

-40 °F / 250 °F
-40 °C / 121 °C

MAX OPERATING TEMPERATURE

135 °C, 257 °F

TUBE

Oil resistant synthetic rubber

REINFORCEMENT

Four high tensile steel spirals (DN 19 + 24), Six high tensile steel spirals (DN 31+ 38)

COVER

Synthetic rubber with high ozone, weather and heat resistance

APPLICABLE SPECS

Exceed SAE 100 R15, ISO 3862 R15

TYPE APPROVALS

ABS, BV (MED), DNV-GL, FRAG, OI-TR, LR, MA, MSHA, B

HOSES

11-111

EXTREME

GOLDENISO

GOLDENISO/35 XTRAFLEX/4SP

COMPACTNESS AND FLEXIBILITY



KEY FEATURES



APPLICATIONS & FLUIDS

- High pressure power lines for general hydraulics
- Applications with installation constraints (short assemblies, compact spaces, low bend radii, etc.)
- Mineral oils, vegetable oils and synthetic ester based oils (up to 100°C/212°F), glycols and polyglycols, mineral oils in aqueous emulsion, water

TECHNICAL DATA

PART NO.	HOSE END		R.O.D.		O.D.		MAX W.P.		STRENGTH		WEIGHT		CONSTRUCTION				
	DN	dash	inch	mm	inch	mm	inch	bar	psi	bar	psi	mm	inch	g/m	lb/ft		
H10006102	10	-8	3/8"	18.2	0.68	18.0	0.71	330	5070	160	2030	80	3.15	530	0.86	MF-M00310-08	DPK-08
H10006102	12	-8	1/2"	19.0	0.77	21.8	0.86	330	5070	160	2030	89	3.54	660	0.84	MF-M00310-08	DPK-08
H10006102	16	-10	5/8"	23.5	0.93	25.2	1.01	330	5070	160	2030	100	3.94	834	0.63	MF-M00310-10	DPK-10
H10006102	18	-12	3/4"	27.5	1.08	29.9	1.18	330	5070	160	2030	120	4.72	1260	0.82	MF-M00310-12	DPK-12
H10006202	20	-15	1"	34.6	1.36	37.0	1.46	330	5070	160	2030	150	5.51	1800	1.21	SP-M01300-15	SP-M00400-10
H10006202	31	-20	1 1/8"	42.1	1.66	44.9	1.77	330	5070	160	2030	220	8.66	2040	1.37	SP-M01300-20	SP-M00400-20
H10006302	38	-24	1 1/2"	50.9	2.00	55.1	2.21	330	5070	160	2030	300	11.81	4165	2.86	SP-M01800-24	SP-M00500-24
H10006302	51	-32	2"	60.8	2.39	70.4	2.77	330	5070	160	2030	360	14.17	6161	4.14	SP-M01800-32	SP-M00500-32

CONTINUOUS SERVICE TEMPERATURE

RANGE

-50 °F / 250 °F
-45 °C / 101 °C

MAX OPERATING TEMPERATURE

125 °C / 257 °F

TUBE

Oil resistant synthetic rubber

REINFORCEMENT

Four high tensile steel spirals (DN 6-31); Six high tensile steel spirals (DN 38-51)

COVER

Synthetic rubber with high abrasion, ozone, weather and heat resistance

APPLICABLE SPECS

ISO 18/28 C-D, JS K0249-3

TYPE APPROVALS

DN-GL, DU-TR, MSHA, FRAS, B

GOLDENSPIR/4SH
ABRASION, WEATHER & HEAT RESISTANCE

KEY FEATURES

- Excellent high temperature performance
- Excellent abrasion resistance
- High strength and low weight
- High resistance to weather and ozone
- Excellent performance in high pressure applications
- Excellent performance in high speed applications
- Excellent performance in high temperature applications

APPLICATIONS & FLUIDS

- Hydraulics: very high pressure power lines in severe environmental conditions, specific installations with tough abrasion conditions, marine applications, underground and open pit mining
- Mineral oils, vegetable oils and synthetic ester based oils (up to 100°C/212°F), glycols and polyglycols, mineral oils in aqueous emulsion, water

TECHNICAL DATA

	HOSE DIA.		B.O.D.		I.D.		MAX. W.P.		B.L.A.D.		B.P.A.S.D.		B.W.G.T.		FITTINGS		
ENVI. REF.	IN	OUT	IN	OUT	IN	OUT	IN	OUT	IN	OUT	IN	OUT	IN	OUT	IN	OUT	
H90D40019	19	19	3/4"	38.2	1.11	37.0	1.06	420	6090	4750	26380	210	8.27	1530	1.61	BP+MO500-12	SP+MO500-12
H90D40022	22	22	1"	35.1	1.56	36.1	1.56	365	5580	4750	25360	220	8.96	2040	1.27	BP+MO1500-10	SP+MO1500-10
H90D40033	33	33	1.315"	42.2	3.66	45.0	1.77	350	5070	4400	20300	420	16.54	2410	1.62	BP+MO1500-20	SP+MO1500-20
H90D40049	49	49	1.91"	49.1	1.53	49.1	2.06	300	4350	4750	18170	560	20.65	3170	2.13	BP+MO1500-24	SP+MO1500-24
H90D40051	51	51	2"	63.5	2.90	67.5	2.66	250	3630	5000	14500	700	27.88	4460	3.00	BP+MO1500-32	SP+MO1500-32

CONTINUOUS SERVICE TEMPERATURE RANGE

 -40 °F / 250 °F
 -40 °C / 121 °C

MAX OPERATING TEMPERATURE

120 °C, 247 °F

TUBE

Oil resistant synthetic rubber

REINFORCEMENT

Four high tensile steel spirals

COVER

Synthetic rubber with high ozone, weather and heat resistance

APPLICABLE SPECS

Exceed EN 856 ADR: ISO 3662-4SR

TYPE APPROVALS

ADR: DNV-GL; DNV-GL (MED); BV; FRAS; CU-TL; LR; MA; MSHA; S; RINA; NK

APPLICATIONS

JACKMASTER

JACKMASTER / Jack Hose

EXTREME STATIC PRESSURE



HOSES

H20-1

KEY FEATURES

- High static pressure (1500 bar/21750 psi)
- Working temperature range: -40 °C (-40 °F) to 121 °C (251 °F)
- Low weight and high flexibility
- Excellent performance in high static pressure applications
- Excellent resistance to ozone and aging
- Excellent resistance to hydraulic oil, mineral oil, rapeseed oil, glycol and polyglycol based oils, synthetic ester based oils, oils in aqueous emulsion, water
- Excellent fire resistance

APPLICATIONS & FLUIDS

- Hydraulic jacking systems
- Mineral oils, vegetable and rape seed oils, glycol and polyglycol based oils, synthetic ester based oils, oils in aqueous emulsion, water

TECHNICAL DATA

PART NO.	HOSE DIA.		I.D.		O.D.		MAX. WP.		BURST		UNBEND.		WEIGHT		FITTINGS		
	DN	dash	inch	mm	inch	mm	inch	bar	psi	bar	psi	mm	inch	g/m	lb/ft	Sd1	Sd2
H10204006*	6	-4	1/4	12.7	0.50	14.7	0.58	725	10510	1450	21030	100	3.94	3.70	0.25	MF-M00400-04	DPP-04
H10204080*	10	-6	3/8	15.9	0.59	18.3	0.60	725	10510	1450	21030	127	5.00	3.85	0.27	MF-M00400-06	DPP-06

CONTINUOUS SERVICE TEMPERATURE

RANGE
-40 °F / -242 °F
-10 °C / -100 °C

MAX OPERATING TEMPERATURE

121 °C, 251 °F

TUBE

Oil resistant synthetic rubber

REINFORCEMENT

Two high tensile steel braids

COVER

Environment resistant synthetic rubber

APPLICABLE SPECS

1/100 hydraulic jack spec., BSQC 10301

TYPE APPROVALS

CE-TR



Remarks:

Product designed for jacking applications.
Any different use may reduce service life. Please contact Manuli Hydraulics for more information.

EXTREME

DIAMONDSPIR

DIAMONDSPIR

VERY HIGH PRESSURE



KEY FEATURES

- Very high pressure resistant
- Excellent performance conditions
- Easy connection (DIN/SAE)
- High abrasion and resistance to ozone
- Water resistant (N. 4 with special cover)
- High burst and working pressure
- Six steel braided spiral reinforcement

APPLICATIONS & FLUIDS

- Hydraulics: heavy duty power lines, hydrostatic transmissions, in severe environmental conditions, specific installations with tough abrasion conditions, off-shore applications, underground and open pit mining
- Mineral oils, vegetable oils and synthetic ester based oils (up to 190°C/212°F), glycols and polyglycols, mineral oils in aqueous emulsion, water

TECHNICAL DATA

PART NO.	HOSE Ø		S.D.C.		I.D.		MAX WP		BURST		MINIMUM		WEIGHT		FITTINGS		
	DN	dash	inch	mm	inch	mm	inch	bar	psi	bar	psi	mm	inch	g/m	lb/ft	Std1	Std2
H1008808F	15	-12	3/4"	25.1	1.15	32.1	1.29	560	8100	2240	32400	260	11.62	460	1.12	3L-36/1750-12	
H1008808F	25	-16	1"	25.2	1.00	41.2	1.62	690	9190	2240	32400	300	13.28	2810	1.96	3L-36/1800-16	
H10088032	31	-20	1 1/4"	41.7	1.68	50.9	2.00	925	7610	2100	30500	420	16.94	4510	2.83	3L-36/1800-20	
H10088038	38	-24	1 1/2"	45.2	2.17	58.7	2.31	975	8880	1900	27300	500	19.89	3200	3.51	3L-36/1800-24	
H10088017	51	-32	2"	50.4	2.00	71.9	2.83	490	6860	1900	27300	600	25.00	6660	4.48	3L-36/1800-32	

CONTINUOUS SERVICE TEMPERATURE

RANGE
-40 °F / -259 °F
-40 °C / -24 °C

MAX OPERATING TEMPERATURE

125 °C, 257 °F

TUBE

Oil resistant synthetic rubber

REINFORCEMENT

Six high tensile steel spirals (DN 25-76). Four high tensile steel spirals (DN 19).

COVER

Synthetic rubber with high abrasion, ozone, weather and heat resistance

APPLICABLE SPECS

MANULI Design, Exceed ISO 3882 R15

TYPE APPROVALS

ABO, FRAS, CU-TR, MSRA, MA

HOSES

H16-1

WATER CLEANING & BLASTING



WATER CLEANING

The **water cleaning** hose range is dedicated to hobby and professional water cleaning machines, with cold and hot water (not suitable for vapour steam applications).

It is designed according to safety norm IEC-2 with safety factor burst/working pressure 4:1.



Please note this product is designed for pressure wash applications. Any different use may reduce service life. Please contact Manuli Hydraulics for more information.

WATER BLASTING

The **water blasting** hose range is designed with the criteria of maximum robustness and easy handling in mind, complete with a dedicated fitting solution, to meet the safety and performance criteria connected with blasting applications.

Safety factor burst/working pressure is 2,5:1, it complies with international specifications (AS/NZ 4233.2, RMA-USA, ISO 7751, BFPA-UK, EN1829-2).

HOSES

WATER CLEANING & BLASTING

MF2000® WATER

RANGE	HOSE	HOSE STRUCTURE	KEY PERFORMANCE
WATER CLEANING	X-FIT	Wire braid	Pressure wash
	SUPERJET	Wire braid	Pressure wash
	SUPERJET/PLUS	Wire braid	Pressure wash
	PROJET	Wire braid	Pressure wash
WATER BLASTING	GOLDENBLAST™	Wire spiral	Safe waterblast technology
	GOLDENBLAST™/PLUS	Wire spiral	Safe extended technology
	GOLDENBLAST™/PSK	Wire spiral	Safe extended technology

GUIDE TO SELECT MANULI® HOSE BY W.P.

HOSE SIZE	WORKING PRESSURE (bar)														
	DN	5	8	10	12	16	19	23	27	30	35	40	45	50	
	DASH	- 5	- 8	- 10	- 12	- 16	- 19	- 23	- 27	- 30	- 35	- 40	- 45	- 50	
K-BL			210	210	270	270									
SUPERJET			280	280											
SUPERJET/PLUS			400	550	550	275									
PROJET			400	400	400	350									
GOLDENBLAST™					750	750									
GOLDENBLAST™/PLUS					1250	1100	1000	700							
GOLDENBLAST™/PSK					1600		1350								

GOLDENBLAST™

SAFE WATERBLAST TECHNOLOGY



PART. REF.	HOSE SIZE	R.O.D.	O.D.	MAX W.P.	BURST PRESSURE	MIN. BEND RADIUS	WEIGHT	FITTING
	DN dash inch	mm inch	mm inch	bar psi	bar psi	mm inch	g/m lb/ft	
H10072000®	10 -06 3/8"	17.4 0.69	20.2 0.80	750 10870	1875 27150	180 7.09	700 0.47	BL+ M10/30-03
H10072412®	12 -08 1/2"	20.4 0.80	23.0 0.91	750 10870	1875 27150	220 8.66	820 0.55	BL+ M10/30-03

GOLDENBLAST™/PLUS

SAFE WATERBLAST TECHNOLOGY



PART. REF.	HOSE SIZE	R.O.D.	O.D.	MAX W.P.	BURST PRESSURE	MIN. BEND RADIUS	WEIGHT	FITTING
	DN dash inch	mm inch	mm inch	bar psi	bar psi	mm inch	g/m lb/ft	
H10066000®	10 -06 3/8"	17.4 0.69	20.0 0.79	1250 18120	3125 45500	270 10.66	880 0.54	BL+ M10/30-03
H10066412®	12 -08 1/2"	21.5 0.85	24.4 0.96	1100 15950	2750 39830	220 9.06	1170 0.75	BL+ M10/30-03
H10066800®	18 -12 3/4"	28.0 1.10	32.0 1.26	900 13050	2500 36250	250 9.84	1750 1.16	BL+ M10/30-03
H10066005®	25 -10 1"	35.1 1.38	38.3 1.50	700 10150	1750 25370	250 9.84	2040 1.37	BL+ M10/30-03

REFRIGERATION

REFRI


The Manuli Refrigeration offer consists of reinforced rubber hoses, fittings, hose assemblies and kits. The Refrigeration offer is designed specifically to satisfy the most restricted requirements for:

- bus air conditioning and mobile refrigeration systems for "on-road industrial vehicles"
- air conditioning systems applied on off-highway industrial vehicles such as: agricultural machines, earth-moving machines, forestry machines, etc.

A special "field-attachable" fitting technology allowing a convenient mounting and disassembly operation is part of the product offer, in particular:

- Frigidic® fitting range technology
- Reusable fitting range technology

Furthermore crimped fitting solutions are completely integrated on all hose lines.

REFRI



Bus air conditioning



Off highway air conditioning



Mobile refrigeration

HOSE	KEY PERFORMANCE	INSERT	CLAMP	FERRULE	ONE-PIECE
REFRIMASTER	SAE J2064 TYPE E	FRIGOLIC (field attachable solution)	C00900	C00700	-
REFRIMASTER PLUS			C00950	C00750	-
REFRISTAR	SAE J2064 TYPE B	STAR-FIT (reusable solution)	-	K00400	-
		STAR CRIMP (crimped solution)	-	C00900	-
REFRISAST	SAE J2064 TYPE A	-	-	-	HST-CRIMP (OPC only)
ULTRASTAR	SAE J2064 EXCEED TYPE B	STAR-CRIMP (crimped solution)	-	C00900	-
		STAR-FIT (reusable solution)	-	K00400	-

REFRI STAR

SAE J2064 TYPE B

MANULI	KEY	Q.D.	DBP	STAR	KA	STAR-FIT FERRULE	STAR-CRIMP FERRULE	
PART. REF.	HOSE SIZE	O.D.	WORKING PRESSURE	BURST PRESSURE	MIN. BEND RADIUS	WEIGHT	STAR-FIT FERRULE (REUSABLE)	STAR-CRIMP FERRULE (CK MPED)
	DN dash inch	mm inch	bar psi	bar psi	mm inch	g/m lb/ft	code	code
H0110005*	5 -04 1/2"	33,0 1,31	35 500	150 2170	85 3,35	205 0,84	K00400-04	C00950-04
H0110008*	8 -06 1/2"	32,3 1,27	35 500	150 2170	85 3,35	515 0,22	K00400-06	C00950-06
H0110010*	10 -08 3/4"	38,3 1,51	35 500	150 2170	95 3,74	380 0,76	K00400-08	C00950-08
H0110012*	11 -10 1/2"	35,4 1,39	35 500	150 2170	115 4,53	320 0,55	K00400-10	C00950-10
H0110016*	16 -12 3/8"	27,8 1,09	35 500	150 2170	155 6,10	360 0,44	K00400-12	C00950-12
H0110022*	22 -16 7/8"	31,2 1,23	35 500	150 2170	155 6,10	670 0,75	K00400-16	C00950-16
H0110028*	28 -20 1 1/8"	38,0 1,50	35 500	150 2170	190 7,48	870 0,58	K00400-20	C00950-20
H0110035*	35 -24 1 3/8"	44,8 1,76	35 500	150 2170	230 9,06	1200 0,81	K00400-24	C00950-24

EUROPOWER

R5 HOSE

INTEGRATED, RELIABLE HOSE ASSEMBLY



KEY FEATURES



• Integrated hose and fittings

APPLICATIONS & FLUIDS



- Hydraulics: low-medium pressure lines, general purpose applications
- Mineral oils, vegetable and rape seed oils, glycol and polyglycol based oils, synthetic ester based oils, oils in aqueous emulsion, water, diesel fuel (up to 200°F/93°C)

TECHNICAL DATA

HOSE SIZE		R.O.D.		O.D.		MAX. W.P.		BURST		MIN. BEND		WEIGHT		
DN	dash	inch	mm	inch	mm	inch	bar	psi	bar	psi	mm	inch	g/m	lb/ft
5	- 4	3/16"			13,2	0,52	210	3040	840	12180	75	2,95	220	0,15
6	- 5	1/4"			14,8	0,58	210	3040	840	12180	85	3,35	260	0,17
8	- 6	5/16"			17,1	0,67	157	2270	630	9130	100	3,94	305	0,20
10	- 8	13/32"			19,4	0,76	140	2030	560	8120	115	4,53	365	0,25
12	- 10	1/2"			23,3	0,92	122	1760	490	7100	140	5,51	495	0,33
16	- 12	5/8"			27,3	1,07	105	1520	420	6090	185	6,50	650	0,44
22	- 16	7/8"			31,2	1,23	56	810	224	3240	185	7,28	600	0,40
28	- 20	1,1/8"			38,0	1,50	43	620	175	2530	229	9,02	780	0,52
35	- 24	1,3/8"			44,3	1,74	35	500	140	2030	285	10,43	1010	0,68
46	- 32	1,13/16"			56,1	2,21	24	340	98	1420	335	13,19	1400	0,94

CONTINUOUS SERVICE TEMPERATURE RANGE

-40 °F / -212 °F
-40 °C / -600 °C

MAX OPERATING TEMPERATURE

191 °C, 359 °F

TUBE

Oil resistant synthetic rubber

REINFORCEMENT

One high tensile steel braid

COVER

One textile braid

APPLICABLE SPECS

SAE 100 R5

TYPE APPROVALS

CU-TR



Power Steering

PS188 Power Steering Hose



Designed to meet requirements of SAE J2050 specifications.

Recommended For: Power steering pressure lines. Designed to meet requirements of SAE J2050 specifications.

Tube: Synthetic rubber specially compounded to provide resistance to high temperatures and power steering fluid (Hyalon® - Type M)*.

Reinforcement: Two high strength nylon braids that resist high temperatures and allow for expansion for system noise dampening.

Cover: Black, synthetic rubber developed specifically to resist under hood environment (Hyalon®).

Temperature Range: -40°F to +300°F (-40°C to +150°C).

Couplings: Permanent Power Steering Couplings, pages J2-3



SPECIFICATIONS

Description	Length	Length	Product No.	 Min. I.D. (in.)	 Hose O.D. (in.)	 Working Pressure (psi)	 Min. Burst Pressure (psi)	 Min. Bend Radius (in.)
6PG188	50 FEET	198 METER	3317-0884	3/8	0.71	1,500	5,000	3.25

* Hyalon is a registered trademark of Gates.



The World's Most Trusted Name in Belts, Hose and Hydraulics.



TUBI TERMOPLASTICI SERIE OL7

Da 70 bar a 250 bar

THERMOPLASTIC HOSES OL7 SERIES

From 70 bar to 250 bar - From 1015 psi to 3625 psi



Caratteristiche tecniche dei tubi serie OL7 con rinforzo tessile conformi o superiori alla norma SAE 10007
 Technical features of the OL7 series hoses with textile reinforcement meeting or exceeding SAE 10007 standard

SCHEDA TECNICA - TUBI TERMOPLASTICI SERIE OL7

DATA SHEET - THERMOPLASTIC HOSES OL7 SERIES

Riferimento Reference	Ø					PRESSIONE A 23°C PRESSURE AT 23°C		PRESSIONE PRESSURE		RAGGIO RADIUS		Peso Weight (kg/m)	Peso Weight (lb/ft)	Codice Accesso Female Code
	Interno Interno (inch)	Interno Interno (mm)	esterno esterno (inch)	esterno esterno (mm)	Scoppio max. max. Burst (bar)	Scoppio max. max. Burst (psi)	Esercizio max. Working max. (bar)	Esercizio max. Working max. (psi)	Curvatura min. min. Bend (mm)	Curvatura min. min. Bend (inch)				
OL70060	1/8"	3,5	0,325	8,5	920	13340	200	3035	12	0,47	87	0,020	SP1987	
OL70540000	5/32"	4,0	0,31	8,9	1000	14500	250	3625	25	0,95	58	0,029	SP5287	
OL720000	3/16"	4,8	0,294	10,0	940	12180	210	3045	30	1,18	72	0,049	SP5107	
OL730000	1/4"	6,4	0,465	11,8	950	11600	200	2910	35	1,28	90	0,060	SP1457	
OL750000	5/16"	8,0	0,563	14,3	760	11020	180	2755	45	1,77	126	0,066	SP5187V	
OL750000	3/8"	9,7	0,63	16,0	700	10150	175	2537	55	2,17	150	0,101	SP5087V	
OL760100	1/2"	13,0	0,789	20,3	560	8120	140	2030	75	2,95	219	0,147	SP124V	
OL770100	5/8"	16,0	0,925	23,5	420	6000	105	1522	120	4,72	277	0,166	SP5887	
OL790100	3/4"	19,2	1,043	26,5	360	5220	90	1303	145	5,71	350	0,222	SP1347	
OL790100	1"	25,6	1,322	33,6	280	4060	70	1015	200	7,87	480	0,271	SP180	

Caratteristiche tecnico-costruttive:

Anima interna in polietilene termoplastico, rinforzo in fibra poliestere e rivestimento esterno in poliarilene antiabrasione stabilizzato ai raggi UV e resistente ai microorganismi; a richiesta microperforato per passaggio aria e gas compatibili.

Applicazioni:

Le tubazioni della serie OL7 sono state create per uso idrodinamico a media pressione.

Temperature di utilizzo:

Da -10°C a +100°C Da -10°F a +212°F

Per aria, acqua e fluidi a base acquosa la temperatura massima di esercizio è -10°C (+16°F).

Pressioni d'esercizio:

Rapporto di sicurezza 1:1

Valore max. di vuoto:

0,93 bar; 700 mm Hg

Specifiche:

Tubazioni conformi o superiori alle norme SAE J517 sec. SAE 10031 - ISO 3949.

* Qualifica OMD/OGATE "TYPE APPROVAL" del Lloyd's Register.

Technical-constructive features:

Internal core in thermoplastic polyethylene, reinforcement in polyester fiber, exterior covering in antiabrasion polyurethane stabilized to UV rays and resistant to micro-organisms; on request it is also available in micro-perforated version for air and compatible gas.

Applications:

The OL7 series hoses have been created for hydraulic use at medium pressure.

Utilization temperature:

From -10°C to +100°C From -10°F to +212°F

Max. working temperature of air, water and fluids containing water: +10°C (+16°F).

Working pressure:

Safety ratio 1:1

Vacuum Rating:

13,5 psi; 27,5 inch Hg

Specifications:

These hoses meet or exceed standards SAE J517 sec. SAE 10007 - ISO 3949.

* Approved hoses (TYPE APPROVAL) by Lloyd's Register.



TUBI TERMOPLASTICI SERIE OLB

Da 145 bar a 420 bar

THERMOPLASTIC HOSES OLB SERIES

From 145 bar to 420 bar - From 2100 psi to 6060 psi



Caratteristiche tecniche dei tubi serie OLB con rinforzo in fibra tessile conformi o superiori alla norma SAE 100R8.
 Technical features of the OLB series hoses with textile fiber reinforcement meeting or exceeding SAE 100R8 standard.

SCHEDA TECNICA - TUBI TERMOPLASTICI SERIE OLB

DATA SHEET - THERMOPLASTIC HOSES OLB SERIES

Riferimento normativa	Ø				PRESSIONE A 23°C PRESSURE AT 23°C		PRESSIONE PRESSURE		RAGGIO RADIUS				
	interno interno (inch)	esterno esterno (mm)	esterno esterno (inch)	interno esterno (mm)	Scoppio min. min. Burst (bar)	Scoppio min. min. Burst (psi)	Esercizio max. Working max (bar)	Esercizio max. Working max (psi)	Curvatura min. min. Bend (mm)	Curvatura min. min. Bend (inch)	Peso Weight (g/m)	Peso Weight (lb/ft)	Codice Ricorda Vehicle Code
OLB10000	1/8"	3,5	3,260	7,1	1680	24350	420	6060	50	1,93	37	0,025	3P160L5
OLB40000	5/32"	4,0	3,315	8,0	1680	24350	420	6060	35	1,39	44	0,030	3P480L5
OLB20000	3/16"	4,8	3,364	10,0	1400	20300	350	5075	35	1,30	72	0,045	3P1062
OLB30000	1/4"	6,4	3,465	11,6	1400	20300	350	5075	50	1,67	85	0,057	3P1447
OLB40000	5/16"	8,0	3,563	14,3	1200	16950	325	4712	60	2,29	126	0,080	3P519R74
OLB50000	3/8"	9,7	3,630	16,0	1120	16240	280	4020	70	2,70	140	0,096	3P36074
OLB60100	1/2"	13,0	3,709	20,3	980	14010	245	3505	85	3,74	225	0,151	3P17674
OLB70100	5/8"	16,0	3,825	23,5	780	11310	195	2827	125	4,92	260	0,178	3P597
OLB80100	3/4"	19,3	3,943	26,5	580	8570	168	2390	150	5,91	350	0,237	3P347
OLB90100	1"	25,4	3,966	34,7	500	8410	148	2100	200	7,87	500	0,336	3P188

* Tubazione non prevista dalla norma SAE 100R8

* Not provided for by the standard SAE 100R8

Caratteristiche tecnico-costruttive:

Anima interna in poliestere termoplastico, intonaco in fibre tessili ad alta tenacità e rivestimento esterno in poliammide antiabrasione stabilizzato ai raggi UV e resistente ai microorganismi, a richiesta, microperforato per passaggio d'aria e gas compatibili.

Applicazioni:

Le tubazioni della serie OLB sono state create per uso idrodinamico ad alta pressione.

Temperature di utilizzo:

Da -40°C a +100°C Da -40°F a +212°F

Per aria, acqua e fluidi a base acquosa la temperatura massima di esercizio è +70°C (+158°F)

Pressioni d'esercizio:

Rapporto di sicurezza 1:4

Valore max. di vuoto:

0,93 bar, 700 mm Hg

Specifiche:

Tubazioni conformi o superiori alle norme SAE J517 sec. SAE 100R8 - ISO 3849.

Technical-constructive features:

Internal core in thermoplastic polyester, reinforcement in high tenacity textile fibers; exterior covering in amide polyamide stabilized to UV rays and resistant to micro-organisms; on request it is also available in micro perforated version for air and compatible gas.

Applications:

The OLB series hoses have been created for hydraulic use at high pressure.

Utilization temperature:

From -40°C to +100°C From -40°F to +212°F

Max. working temperature of air, water and fluids containing water: +70°C (+158°F)

Working pressure:

Safety ratio 1:4

Vacuum Rating:

13,5 psi, 27,5 inch Hg

Specifications:

These hoses meet or exceed standards SAE J517 sec. SAE 100R8 - ISO 3849.



TUBI TERMOPLASTICI SERIE TSB

Da 560 bar a 630 bar

THERMOPLASTIC HOSES TSB SERIES

From 560 bar to 630 bar - From 7975 psi to 9135 psi

630 bar



Caratteristiche tecniche dei microtubi con rinforzo in fibra aramidica serie TSB
 Technical features of the TSB series micro-hoses with aramidic fiber reinforcement

SCHEDA TECNICA - TUBI TERMOPLASTICI SERIE TSB DATA SHEET - THERMOPLASTIC HOSES TSB SERIES

Riferimento Reference	Interno Internal inch	Interno Internal mm	Esterno External inch	Esterno External mm	PRESSIONE A 23°C PRESSURE AT 23°C		PRESSIONE PRESSURE		RAGGIO RADIUS		Peso Weight g/m	Peso Weight lb/ft	Codice Accesso Female Code
					Scoppio min. Burst bar	Scoppio min. Burst inch	Esercizio max. Working bar	Esercizio max. Working inch	Curvatura min. min. Bend inch	Curvatura min. min. Bend inch			
TS84510000	5/64"	1.8	0.172	4.5	1630	24300	560	8120	15	0.59	1.6	0.011	—
★ TS850210000	1/32"	2.1	0.166	5.0	1890	27400	630	9135	20	0.75	1.9	0.013	BP1500
TS850210000	1/12"	3.1	0.216	9.5	1850	27400	630	9135	21	0.76	2.3	0.015	BP1500
TS850200000	1/10"	2.6	0.216	5.5	1890	27400	630	9135	23	0.76	2.3	0.015	BP1500
TS850270000	1/10"	2.7	0.216	5.5	1890	27400	630	9135	23	0.76	2.2	0.015	BP1500
TS860300000	1/8"	3.0	0.236	6.0	1600	23000	550	7775	30	1.131	26.5	0.018	BP1500
TS8800000	5/32"	4.0	0.315	8.0	1650	23800	550	7975	35	1.35	4.4	0.030	BP410L5

Caratteristiche tecnico-costruttive:

Anima interna in poliestere termoplastico, rinforzo con ara treccia in fibra aramidica, ricopertura esterna in polietilene antibruciatura, a richiesta micro perforato per passaggio aria e gas compatibili.

Applicazioni:

I micro-tubi della serie TSB sono stati creati per un uso idrodinamico ad altissima pressione.

Temperatura di utilizzo:

Da -40°C a +100°C Da -40°F a +212°F

Per aria, acqua e fluidi a base acquosa la temperatura massima di esercizio è + 70°C. (+158°F)

Pressioni d'esercizio:

Rapporto di sicurezza 1:3

Valore max. di vuoto:

0,93 bar; 700 mm Hg

Technical-constructive features:

Internal core in thermoplastic polyester, reinforcement in aramidic fiber braid, exterior covering in antiabrasion polyethylene; on request it is also available in micro perforated version for air and compatible gas.

Applications:

Micro-hoses TSB series have been created for hydraulic use at very high pressure.

Utilization temperature:

From -40°C to +100°C From -40°F to +212°F

Max. working temperature of air, water and fluids containing water: + 70°C. (+158°F)

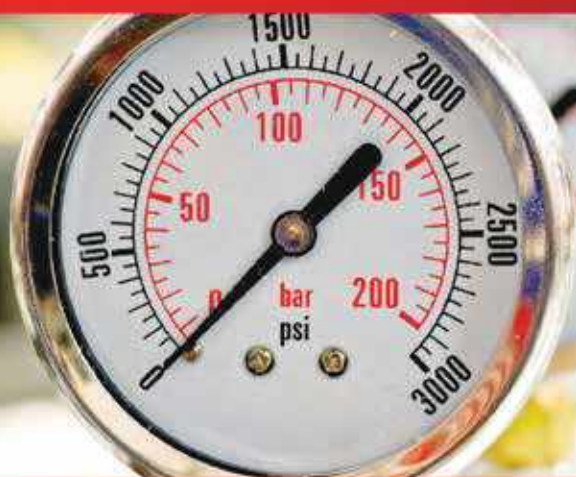
Working pressure:

Safety ratio 1:3

Vacuum Rating:

13.5 psi; 27.5 inch Hg





tec sis

STAUFF



MCS[®]
MINI CONTROL SYSTEM

EUROPOWER

PVC SPRING HOSE

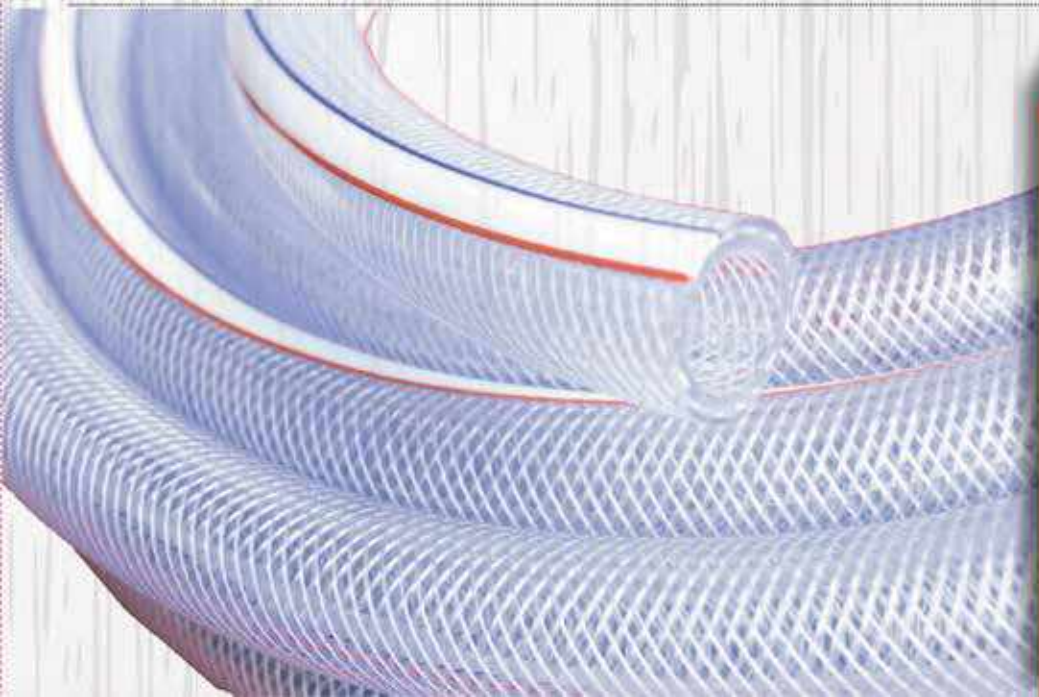
INCH	CODE	ID X OD	THICKNESS (mm)	W/P (bar /psi)	1 Roll (meter)	(KG)
3/8"	PSP-1009	9 X 15	3mm	8/120	100	17.30
1/2"	PSP-1012	12 X 18	3mm	8/120	100	21.62
5/8"	PSP-1015	15 X 22	3.5mm	8/120	100	31.11
3/4"	PSP-1019	19 X 26	3.5mm	5/75	50	18.92
7/8"	PSP-1022	22 X 29	3.5mm	5/75	50	21.44
1"	PSP-1025	25 X 33	4mm	5/75	50	27.86
1 1/8"	PSP-1028	28 X 36	4mm	4/60	40	24.60
1 1/4"	PSP-1032	32 X 41	4.5mm	4/60	40	31.56
1 3/8"	PSP-1035	35 X 44	4.5mm	4/60	40	34.16
1 1/2"	PSP-1038	38 X 48	5mm	4/60	40	41.32
1 5/8"	PSP-1041	41 X 51	5mm	4/60	40	44.20
1 3/4"	PSP-1045	45 X 55	5mm	4/60	40	48.04
1 7/8"	PSP-1048	48 X 58	5mm	4/60	40	50.92
2"	PSP-1051	51 X 62	5.5mm	4/60	40	60.00
2 1/4"	PSP-1057	57 X 70	6.5mm	4/60	20	39.66
2 1/2"	PSP-1064	64 X 80	8mm	4/60	20	54.58
3"	PSP-1076	76 X 92	8mm	3/45	20	63.80
3 1/2"	PSP-1090	90 X 106	8mm	3/45	10	37.66
4"	PSP-1102	102 X 118	8mm	3/45	20	83.02
5"	PSP-1127	127 X 145	9mm	2/30	10	58.00
6"	PSP-1152	152 X 168	8mm	2/30	10	68.00
★ 3/4" Thin Type	PSP-1019T	19 X 24	2.5mm	4/60	50	13.00
★ 1" Thin Type	PSP-1025T	25 X 31	3mm	4/60	50	22.50
★ 1 1/4" Thin Type	PSP-1032T	32 X 38	3mm	3/45	40	20.00
★ 1 1/2" Thin Type	PSP-1038T	38 X 45	3.5mm	3/45	40	28.00
★ 2" Thin Type	PSP-1050T	50 X 58	4mm	3/45	40	40.00
★ 3" Thin Type	PSP-1075T	75 X 87	6mm	2/30	20	46.00
★ 4" Thin Type	PSP-1100T	100 X 114	7mm	2/30	20	70.00

EUROPOWER

PVC REINFORCED HOSE

WHITE (RED & BLUE LINING)

INCH	CODE	ID X OD	W/P (bar /psi)	1 Roll (meter)	(KG)
1/4"	PHN-2006	6.0 X 11.0	10/145	100	9.30
5/16"	PHN-2008	8.0 X 13.5	10/145	100	13.0
3/8"	PHN-2009	9.5 X 15.0	10/145	100	14.8
1/2"	PHN-2012	12.5 X 18.0	10/145	100	18.4
5/8"	PHN-2016	16.0 X 22.0	8/115	50	25.1
3/4"	PHN-2019	19.0 X 26.0	6/90	50	34.6
1"	PHN-2025	25.0 X 32.0	5/75	50	43.9
1 1/4"	PHN-2032	32.0 X 41.0	5/75	40	72.2
1 1/2"	PHN-2038	38.0 X 48.0	5/75	40	94.5
2"	PHN-2050	50.0 X 62.0	5/75	40	147.7



EUROPOWER

PVC SUCTION HOSE

(CORRUGATED)

Application: Corrugated outer surface with smooth inner bore reinforced with a rigid pvc helix. Highly flexible and light weight which facilitates easy installation as it has small bending radius.

CODE	NOMINAL DIAMETER	BENDING RADIUS	WORKING PRESSURE kp/cm²	STANDARD LENGTH
CSH25	25mm (1")	100mm	4.0	20m
CSH32	32mm (1 1/4")	130mm	3.5	20m
CSH38	38mm (1 1/2")	155mm	3.5	20m
CSH50	50mm (2")	200mm	3.0	20m
CSH65	65mm (2 1/2")	260mm	3.0	20m
CSH76	76mm (3")	300mm	2.5	20m
CSH90	90mm (3 1/2")	360mm	2.0	20m
CSH100	100mm (4")	400mm	2.0	20m
CSH125	125mm (5")	500mm	2.0	20m
CSH152	152mm (6")	600mm	1.5	20m



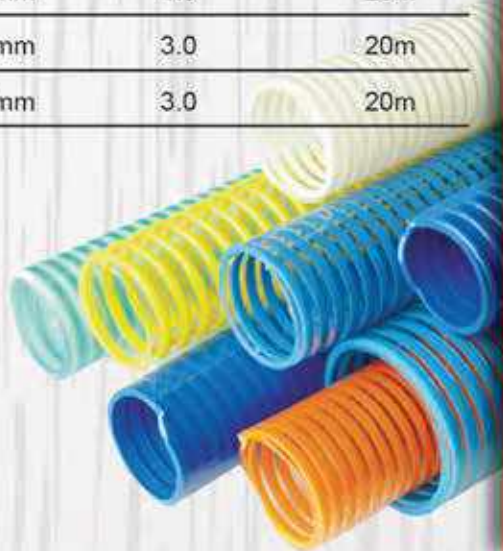
EUROPOWER

PVC SUCTION HOSE

(SMOOTH SURFACE) Heavy Gauge

Application: Smooth inner and outer wall surface reinforced with an integral helix of rigid pvc. Able to withstand strong air and liquid suction pressure. Also, ideal for conveying powder or granules form materials.

CODE	NOMINAL DIAMETER	THICKNESS	WORKING PRESSURE kp/cm ²	STANDARD LENGTH
SSH25	25mm (1")	4.0mm	7.0	20m
SSH32	32mm (1 1/4")	4.5mm	6.5	20m
SSH38	38mm (1 1/2")	5.0mm	6.5	20m
SSH50(3.5)	50mm (2")	3.5mm	4.0	20m
SSH50(5.0)	50mm (2")	5.0mm	6.5	20m
SSH65	65mm (2 1/2")	5.0mm	5.0	20m
SSH76(4.5)	76mm (3")	4.5mm	3.5	20m
SSH76(5.2)	76mm (3")	5.2mm	4.5	20m
SSH100	100mm (4")	7.0mm	4.0	20m
SSH125	125mm (5")	7.0mm	3.0	20m
SSH152	152mm (6")	8.0mm	3.0	20m



EUROPOWER

PVC DUCT HOSE

Europower PVC Duct Hoses are designed with a smooth bore PVC ducting reinforced with an external rigid PVC helix all around. The highly flexible and smooth inner bore of these Europower Duct Hoses are most ideal for moderate pressure water and air discharge applications. They are also extensively used for ventilation ducting and conveying powder particles.

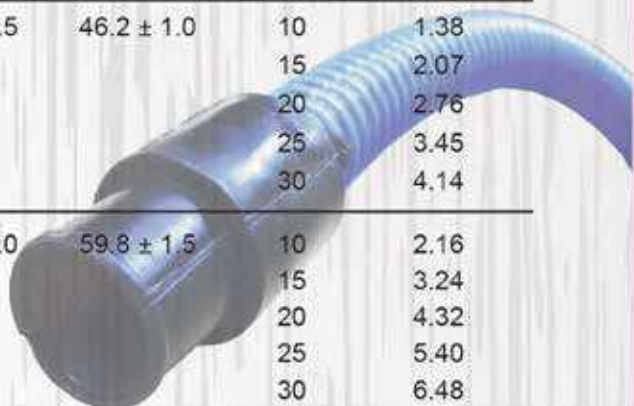
CODE	NOMINAL DIAMETER	OUTER DIAMETER	STANDARD LENGTH
DH25	25mm (1")	32.0mm (± 1.0)	20m
DH32	32mm (1 1/4")	38.0mm (± 1.0)	20m
DH38	38mm (1 1/2")	44.5mm (± 1.0)	20m
DH50	50mm (2")	59.5mm (± 1.5)	20m
DH65	65mm (2 1/2")	71.5mm (± 1.5)	20m
DH75	75mm (3")	85.0mm (± 1.5)	20m
DH90	90mm (3 1/2")	98.0mm (± 1.5)	20m
DH100	100mm (4")	112.0mm (± 1.5)	20m
DH114	114mm (4 1/2")	124.5mm (± 1.5)	20m
DH125	125mm (5")	137.5mm (± 1.5)	20m
DH150	150mm (6")	163.5mm (± 1.5)	20m
DH175	175mm (7")	189.5mm (± 1.5)	20m
DH200	200mm (8")	216.5mm (± 2.0)	20m



PVC CORRUGATED

SUCTION HOSE

INCH	CODE	ID	OD	LENGTH (Per Roll / Feet)	WEIGHT (Per Roll / KG)
1 1/2"	PCSU-1 1/2	38.0 ± 0.5	46.2 ± 1.0	10	1.38
				15	2.07
				20	2.76
				25	3.45
				30	4.14
2"	PCSU-2	50.6 ± 1.0	59.8 ± 1.5	10	2.16
				15	3.24
				20	4.32
				25	5.40
				30	6.48
2 1/2"	PCSU-2 1/2	62.4 ± 1.0	73.0 ± 1.5	10	3.00
				15	4.50
				20	6.00
				25	7.50
				30	9.00
3"	PCSU-3	76.4 ± 1.0	88.8 ± 1.5	10	4.20
				15	6.30
				20	8.40
				25	10.50
				30	12.60
4"	PCSU-4	101.6 ± 1.5	117.6 ± 2.0	10	7.35
				15	11.03
				20	14.70
				25	18.38
				30	22.05



EUROPOWER

PVC YELLOW SPRAY/AIR HOSE

INCH	CODE	ID X OD	W/P (bar /psi)	1 Roll (meter)	(KG)
★ 5/16" SPRAY HOSE	CPS-2008 (40 bar)	8.5 X 14.5	40/600	100	15.2
★ 5/16"	CPS-2008 (20 bar)	8.5 X 13.5	20/300	100	12.1
3/8"	CPS-2010	10.0 X 16.0	40/600	100	17.1
1/2"	CPS-2013	13.0 X 20.0	20/300	100	25.4
3/4"	CPS-2019	19.0 X 28.0	20/300	100	46.50
1"	CPS-2025	25.0 X 33.0	20/300	100	51.0

★ Complete with brass fitting M14 x 1.5 Male & M14 x 1.5 Female



HONG-IL(KOREA)

PVC YELLOW SPRAY HOSE

INCH	CODE	ID X OD	W/P (bar /psi)	1 Roll (meter)	1 Roll (KG)
★ 5/16"	KPS-2008 (50 bar)	8.5 X 14.5	50/725	100	13.5
3/4"	KPS-2019 (35 bar)	19.0 X 27.5	35/500	100	41.0

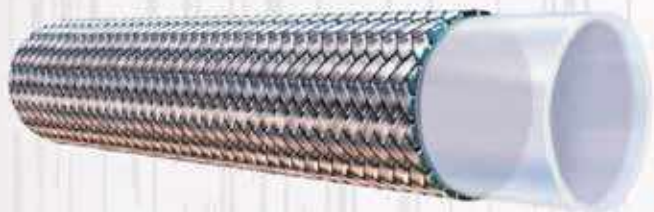
★ Complete with brass fitting M14 x 1.5 Male & M14 x 1.5 Female





TEFLON

HOSE



Teflon hoses may be a good choice for applications where the following characteristics are required or specified:

- Heat and cold resistance
- Corrosion resistance
- Non-toxicity
- Extremely low permeability
- Light weight
- Flex/fatigue resistance
- Ease of cleaning/sanitizing
- UV/ozone resistance

Application

Chemical transfer lines

Industrial Gas – filling lines

Marine – Hydraulic lines for steering systems and fluid lines for engine compartment

Off Shore Oil – transfer lines for well gases and fluids

Paper Industry – steam lines, transfer lines for solvent, pigments and bleaching

Tyre Manufacturing – steam lines on tyre presses

Automotive – brake lines, turbo feed and drain hoses, compressor discharge lines

Food and Beverage

Teflon Hose Part No.	ID (inch)
2807-03	1/8
2807-04	3/16
2807-05	1/4
2807-06	5/16
2807-07	3/8
2807-08	13/32
2807-10	1/2
2807-12	5/8
2807-14	3/4
2807-16	7/8
2807-18	1



STAINLESS STEEL FLEXIBLE HOSE



BSP, JIC MALE FEMALE
STAINLESS STEEL HOSE
ARGON WELDING FITTING



BSPT & NPT STAINLESS STEEL HOSE
ARGON WELDING FITTING
(STAINLESS STEEL 304 & 316)



Carbon Steel Seamless Tube

DIN 2391C St37.4(NBK)

OD(mm)	WT(mm)	Kg/lgth
6.00	1.00	0.74
6.00 Nozzle Pipe	2.00	1.184
6.35 (1/4")	1.22	0.926
7.00 Nozzle Pipe	2.25	1.581
8.00	1.00	1.036
8.00	1.50	1.443
8.00	2.00	1.775
9.525 (3/8")	1.22	1.499
10.00	1.50	1.887
10.00	2.00	2.368
12.00	1.50	2.331
12.00	2.00	2.959
12.70(1/2")	1.42	2.37
14.00	2.00	3.551
15.00	1.50	2.996
15.00	2.00	3.847
15.875 (5/8")	1.65	3.475
16.00	2.00	4.143
18.00	1.50	3.662
18.00	2.00	4.735
19.05(3/4")	2.03	5.12
20.00	2.00	5.327
20.00	2.50	6.474
22.00	2.00	5.919
22.00	2.50	7.213
25.00	3.00	9.766
25.40(1")	2.64	8.89
28.00	2.50	9.433
28.00	3.00	11.098
30.00	3.00	11.985
31.75 (1 1/4")	3.26	13.743
35.00	3.00	14.205
38.00	4.00	20.124
38.00	5.00	24.415
42.00	3.00	17.312
42.00	4.00	22.491

*LENGTH 6 METER

Stainless Steel Precision Seamless Tube TP316L DIN 2391 (ASTM A269)

OD(mm)	WT(mm)	Kg/lgth
4.00	0.86	0.39
6.00	1.00	0.7521
8.00	1.00	1.066
10.00	1.00	1.38
10.00	1.50	1.918
12.00	1.00	1.655
12.00	1.50	2.369
15.00	1.50	3.045
16.00	1.50	3.27
16.00	2.00	4.21
18.00	1.50	3.722
18.00	2.00	4.813
20.00	1.50	4.174
20.00	2.00	5.414
22.00	1.50	4.625
22.00	2.00	6.016
25.00	2.00	6.918
25.00	2.50	8.46
25.00	3.00	9.926
28.00	2.00	7.82
30.00	2.50	10.34
30.00	3.00	12.18
35.00	3.00	14.438
38.00	4.00	20.4571
38.00	5.00	24.815
42.00	3.00	17.60
42.00	4.00	22.86
4.7625 (3/16")	0.710	0.43
6.35 (1/4")	0.889	0.73
9.525 (3/8")	0.889	1.155
9.525 (3/8")	1.2446	1.55
12.70 (1/2")	0.889	1.5794
12.70 (1/2")	1.2446	2.1436
12.70 (1/2")	1.651	2.744
15.875 (5/8")	1.2446	2.738
19.05 (3/4")	1.2446	3.3334
19.05 (3/4")	1.651	4.32
19.05 (3/4")	2.030	5.20
25.40 (1")	1.651	5.90
25.40 (1")	2.030	7.136

*LENGTH 6 METER

FIBERGLASS

BRAIDED SLEEVE



Fiberglass sleeve is braided by high quality E grade fiberglass yarns. It can be continuous exposure to high temperature of 550°C. Fiberglass sleeve resists most acids and alkalis and not affected by most bleaches and solvents. Fiberglass sleeve provide thermal insulation and fire proof from high temperature and occasional flame, also affording personal protection.

Size/inner diameter	2mm-180mm
Color	White
Working temperature	≥550°C
Flammability	VW-1
Characters	Excellent heat & flame resistant. Thermal insulation. Highly flexible and comfortable.

FIRE SLEEVE



Made of braided e-grade glass fiber sleeve with silicone rubber coating, which designed as a kind of heavy duty jacket to protect different kinds of hoses, wires and cables from the hazards of high heat and occasional flame. Sheds molten metal splash in steel plants, glass plants, foundries, cutting and welding shops. Good thermal insulation and fire proof performance make Firesleeve reduce heat energy losses and protect employees from burning effectively.

Size/inner diameter

6mm-180mm

Colour

Typically in iron oxide red and black, special colours accept customized.

Working temperature

Continues working at 260°C, short time exposure to 1650°C

Rate voltage

7kv-25 kv

Character

High temp & flame resistant, insulation, anti-aging, avoiding splashing of the molten iron, abrasion resistant, water proof, oil proof, acid and alkali resistant.

FIBERGLASS TAPE



Fiberglass tape woven by the bulk glass fiber, it has good electrical insulation and heat resistance. Provide thermal insulation and fire resistant to industrial wires, cables, hoses, tube and pipe and also personal protection. Resists most acids and alkalis and is unaffected by most bleaches and solvents.

Size/inner diameter	25mm, 50mm, 75mm, 100mm
Color	White
Working temperature	Continues working at 550°C
Characters	High tempt. & flame resistant, electric insulation, anti-aging, avoiding splashing of high tempt. fluid and dust, water and oil proof, resistant to weak alkali.

EUROPOWER

MULTI PURPOSE HOSE 20 BAR

EUROPOWER MULTI PURPOSE HOSE 20 BAR



Applications

This high quality multi-purpose hose is suitable for conveying most of the petroleum based product.

Tube

Black NBR rubber, oil resistant

Reinforcement

High strength synthetic polyester braided

Cover

Red NBR PVC rubber, smooth surface, weather & oil resistant

Temperature Range

- 20°C to + 80°C

Safety Factor

3 : 1

Product Code	Size	ID	OD	Working/Burst Pressure	Weight	Volume	Coil Length
	Inch	mm	mm	Bar	Kg/Mt	M ³	Mt
MPH20-006	1/4	6.3	14.2	20/60	0.19	0.028	100
MPH20-008	5/16	8.0	15.0	20/60	0.20	0.035	100
MPH20-010	3/8	9.5	18.2	20/60	0.25	0.043	100
MPH20-013	1/2	12.7	21.9	20/60	0.35	0.070	100
MPH20-016	5/8	16.0	26.8	20/60	0.47	0.107	100
MPH20-019	3/4	19.0	29.0	20/60	0.61	0.130	100
MPH20-022	7/8	22.0	32.0	20/60	0.68	0.152	100
MPH20-025	1	25.4	36.0	20/60	0.83	0.195	100
MPH20-028	1 1/8	28.5	42.0	20/60	1.20	0.077	30
MPH20-032	1 1/4	32.0	45.0	20/60	1.27	0.109	30
MPH20-038	1 1/2	38.0	53.0	20/60	1.73	0.133	30

EUROPOWER

AIR HOSE 20 BAR

EUROPOWER AIR HOSE 20 BAR



Applications

Heavy duty air supply line. Ideal for rough applications in the mining, construction and hire industries.

Tube

Black SBR / NR rubber

Reinforcement

High strength synthetic polyester braided.

Cover

Black SBR / EPDM rubber smooth surface, abrasion and weather resistant.

Temperature Range

-25°C to +70°C

Safety Factor

3:1

Product Code	Size	ID	OD	Working/Burst Pressure	Weight	Volume	Coil Length
	Inch	mm	mm	Bar	Kg/Mt	M ³	Mt
AH20-006	1/4	6.4	13.0	20/60	0.17	0.028	100
AH20-008	5/16	8.0	15.0	20/60	0.22	0.035	100
AH20-010	3/8	9.5	17.0	20/60	0.27	0.043	100
AH20-013	1/2	12.7	21.0	20/60	0.38	0.070	100
AH20-016	5/8	16.0	25.0	20/60	0.50	0.100	100
AH20-019	3/4	19.0	28.0	20/60	0.58	0.130	100
AH20-025	1	25.4	35.0	20/60	0.79	0.112	60
AH20-032	1 1/4	32.0	44.0	20/60	1.24	0.094	30
AH20-038	1 1/2	38.0	53.0	20/60	1.78	0.133	30
AH20-050	2	50.8	65.0	20/60	2.24	0.268	30

EUROPOWER

EAGLE 20 AIR HOSE

EUROPOWER EAGLE AIR HOSE 20 BAR



Applications

Heavy duty air hose with safety yellow cover is suitable for the transfer of air and water in the mining and hire industries.

Tube

Black SBR / NR rubber, heat and oil mist resistant

Reinforcement

Multi-ply of high strength polyester cords

Cover

Yellow SBR / EPDM rubber, wrapped surface, abrasion and weather resistant.

Temperature Range

- 25°C to + 85°C

Safety Factor

3 : 1

Product Code	Size	ID	OD	Working/Burst Pressure	Weight	Volume	Coil Length
	Inch	mm	mm	Bar	Kg/Mt	M ³	Mt
EAH20-025	1	25.4	37.0	20/60	0.93	0.068	30/60
EAH20-032	1 1/4	32.0	46.0	20/60	1.41	0.125	30/60
EAH20-038	1 1/2	38.0	52.0	20/60	1.60	0.133	30/60
EAH20-050	2	51.0	65.0	20/60	2.08	0.268	30/60
EAH20-065	2 1/2	63.5	80.0	20/60	2.95	0.350	30/60
EAH20-075	3	76.0	94.0	20/60	3.92	0.529	30/60
EAH20-100	4	102.0	124.0	20/60	6.37	1.116	30/60

EUROPOWER

WIRE AIR HOSE 40 BAR



EUROPOWER WIRE AIR HOSE 40 BAR

Applications

Heavy duty air hose for use specifically on drill rigs for high pressure.

Tube

Black, SBR / NR rubber, heat and oil mist resistant

Reinforcement

Multi-ply of steel wire cords

Cover

Yellow SBR / EPDM rubber, wrapped surface, abrasion and weather resistant

Temperature Range

-25°C to +85°C

Safety Factor

3 : 1

Product Code	Size	ID	OD	Working/Burst Pressure	Weight	Volume	Coil Length
	Inch	mm	mm	Bar	Kg/Mt	M ³	Mt
WAH40-025	1	25.4	37.0	40/120	0.92	0.073	30/60
WAH40-032	1 1/4	32.0	44.0	40/120	1.21	0.107	30/60
WAH40-038	1 1/2	38.0	51.0	40/120	1.46	0.133	30/60
WAH40-050	2	51.0	65.0	40/120	1.97	0.268	30/60

EUROPOWER

LAYFLAT AIR HOSE 20 BAR



EUROPOWER LAYFLAT AIR HOSE 20 BAR

Applications

Widely use in air & water supply for construction, mining and industrial areas.
Good resistance to abrasion.

Tube

Yellow, synthetic rubber

Reinforcement

High strength of polyester - Polyimide textile

Cover

Yellow synthetic rubber, ribbed surface

Temperature Range

- 20°C to + 80°C

Product Code	Size	ID	OD	Working/Burst Pressure	Weight	Volume	Coil Length
	Inch	mm	mm	Bar	Kg/Mt	M ³	Mt
LAH20-050	2	52.0	59.0	10/50	0.65	0.035	30/60
LAH20-075	3	76.0	84.0	10/50	0.95	0.052	30/60
LAH20-100	4	102.0	110.0	10/50	1.27	0.089	30/60
LAH20-125	5	127.0	135.0	10/50	1.80	0.106	30/60

EUROPOWER

WATER SUCTION & DISCHARGE HOSE 10 BAR

EUROPOWER WATER SUCTION & DISCHARGE HOSE 10 BAR

Applications

A Medium duty suction hose is suitable for use in agriculture, construction and mining industries. This hose is suitable for water and light slurry transfer in both negative and positive pressure applications.

Tube

Black SBR / NR rubber

Reinforcement

Piles of high strength polyester cord incorporating a steel helix wire

Cover

Black SBR / EPDM rubber, wrapped surface, abrasion and weather resistant.

Temperature Range

-20°C to +70°C

Safety Factor

3:1

Product Code	Size Inch	ID mm	OD mm	Working/Burst Pressure Bar	Weight Kg/Mt	Volume M ³	Coil Length Mt
WSH10-025	1	25.4	36.9	10/30	0.90	0.068	30/60
WSH10-032	1 1/4	32.0	44.3	10/30	1.11	0.094	30/60
WSH10-038	1 1/2	38.0	50.3	10/30	1.32	0.125	30/60
WSH10-050	2	51.0	63.4	10/30	1.95	0.237	30/60
WSH10-065	2 1/2	63.5	76.8	10/30	2.45	0.329	30/40
WSH10-075	3	76.0	91.2	10/30	3.35	0.507	30/40
WSH10-090	3 1/2	89.0	107.8	10/30	3.91	0.647	30/40
WSH10-100	4	102.0	123.0	10/30	5.23	0.992	30/40
WSH10-127	5	127.0	148.8	10/30	5.23	0.992	15/20
WSH10-150	6	152.4	176.0	10/30	9.73	2.612	15/20
WSH10-200	8	203.0	227.0	10/30	12.30	5.695	10/15

EUROPOWER

SEA WATER SUCTION & DISCHARGE HOSE 20 BAR

EUROPOWER SEA WATER SUCTION & DISCHARGE HOSE 20 BAR

Applications

A Heavy duty suction hose is suitable for use in agriculture, construction and mining industries. This hose is suitable for water, sea water, waste water and light slurry transfer in both negative and positive pressure applications.

Tube

Black SBR / NR rubber

Reinforcement

Piles of high strength polyester cord incorporating a steel helix wire

Cover

Black, SBR / EDPM rubber, wrapped surface, abrasion and weather resistant

Temperature Range

-30°C to +80°C

Safety Factor

3:1

Product Code	Size	ID	OD	Working/Burst Pressure	Weight	Volume	Coil Length
	Inch	mm	mm	Bar	Kg/Mt	M ³	Mt
SWS20-050	2	51.0	66.6	20/60	2.32	0.260	30/60
SWS20-065	2 1/2	63.5	80.0	20/60	3.49	0.355	30/40
SWS20-075	3	76.0	92.0	20/60	3.85	0.507	30/40
SWS20-100	4	102.0	123.8	20/60	6.45	1.080	30/40
SWS20-127	5	127.0	149.6	20/60	6.45	1.080	15/20
SWS20-150	6	152.4	178.4	20/60	11.83	2.673	15/20
SWS20-200	8	203.0	229.4	20/60	16.72	5.847	10/15

EUROPOWER

RUBBER WATER SUCTION HOSE

EUROPOWER RUBBER WATER SUCTION HOSE 5 BAR

Applications

Highly flexible rubber hose is suitable for the transfer of water in negative pressure applications. 6 /7.5 meter lengths incorporation for ease to handle.

Tube

Black SBR / NR rubber

Reinforcement

Piles of high strength polyester cord incorporating a steel helix wire

Cover

Black, SBR / EPDM rubber, wrapped surface, abrasion and weather resistant.

Temperature Range

- 20°C to + 70°C

Safety Factor

3 :1

Product Code	Size	ID	OD	Working/Burst Pressure	Weight	Volume	Coil Length
	Inch	mm	mm	Bar	Kg/Mt	M ³	Mt
RWSH5-100/20	4	102.0	117.0	5/15	5.23	0.082	6.0
RWSH5-100/25	4	102.0	117.0	5/15	5.23	0.103	7.5
RWSH5-150/20	6	152.4	170.0	5/15	9.22	0.173	6.0
RWSH5-150/25	6	152.4	170.0	5/15	9.22	0.217	7.5
RWSH5-200/20	8	203.0	223.0	5/15	13.44	0.301	6.0
RWSH5-200/25	8	203.0	223.0	5/15	13.44	0.376	7.5

EUROPOWER

STEAM HOSE 210°C



EUROPOWER STEAM HOSE 210°C

Applications

Steel cord hose for saturated steam at a maximum working pressure 18 bar (261psi), used in the chemical industry, petrochemical and industrial applications in general. Not recommended for steam cleaner. The hose can be used for peaks of superheated steam at 230°C and at 18 bar. Attention: the use of superheated steam reduces the hose life span. For longer life drain after used.

Tube

Black, smooth, EPDM rubber, resistant to saturated steam.

Reinforcement

Insert of steel wire

Cover

Red, pin-pricked, smooth (wrapped finish), EPDM rubber with excellent resistance to high temperatures, weathering, abrasion and ageing.

Temperature Range

-40°C to +210°C

Safety Factor

10:1

Product Code	Size Inch	ID mm	OD mm	Working/Burst Pressure Bar	Weight Kg/Mt	Volume M ³	Coil Length Mt
SH210C-013	1/2	13.0	25.0	18/180	0.49	0.090	60/120
SH210C-019	3/4	19.0	31.0	18/180	0.64	0.103	60/120
SH210C-025	1	25.0	37.0	18/180	0.87	0.186	60/120
SH210C-032	1 1/4	32.0	46.5	18/180	1.27	0.216	60/120
SH210C-038	1 1/2	38.0	52.0	18/180	1.45	0.300	60/120
SH210C-050	2	51.0	66.5	18/180	2.27	0.432	60/120

EUROPOWER

TWIN WELDING HOSE

EUROPOWER TWIN WELDING HOSE (OXY) 20BAR

EUROPOWER TWIN WELDING HOSE (ACY) 20BAR

Applications

Dual extruded medium pressure hose is suitable for the transfer of oxygen and acetylene gas for welding and gas cutting applications.

Tube

Black SBR / NR rubber

Reinforcement

High strength synthetic polyester braided

Cover

Red / Blue, SBR / EPDM rubber, smooth surface rubber, abrasion and weather resistant

Temperature Range

- 20°C to + 70°C

Safety Factor

3 : 1

Product Code	Size	ID	OD	Working/Burst Pressure	Weight	Volume	Coil Length
	Inch	mm	mm	Bar	Kg/Mt	M ³	Mt
TWH20-006	1/4	6.3	13.0	20/60	0.36	0.059	100

* Both hose are in same size

EUROPOWER

FUEL HOSE 10 BAR

EUROPOWER FUEL HOSE 10 BAR



Applications

Designed for use in fuel line systems for the transfer of petroleum product under low pressure.

Tube

Black NBR rubber, oil resistant

Reinforcement

High strength synthetic polyester braided

Cover

Black NBR / EPDM rubber, smooth surface, heat & oil mist resistant

Temperature Range

- 20°C to + 70°C

Safety Factor

3 : 1

Product Code	ID mm	OD mm	Working/Burst Pressure Bar	Weight Kg/Mt	Volume M ³	Coil Length Mt
FH10-004	4.0	10.0	10/30	0.09	0.022	100
FH10-005	5.0	11.0	10/30	0.11	0.022	100
FH10-006	6.0	12.0	10/30	0.12	0.024	100
FH10-007	7.0	13.0	10/30	0.13	0.028	100
FH10-008	8.0	14.0	10/30	0.15	0.033	100
FH10-009	9.0	15.0	10/30	0.16	0.035	100
FH10-010	10.0	16.0	10/30	0.17	0.040	100
FH10-011	11.0	17.0	10/30	0.19	0.043	100
FH10-012	12.0	19.0	10/30	0.24	0.053	100
FH10-013	13.0	20.0	10/30	0.26	0.061	100
FH10-014	14.0	21.0	10/30	0.27	0.070	100
FH10-016	16.0	24.0	10/30	0.36	0.093	100

EUROPOWER

OIL SUCTION HOSE & DISCHARGE HOSE 10 BAR

EUROPOWER OIL SUCTION & DISCHARGE HOSE 10 BAR



Applications

Hardwall hose used for the suction and delivery of petroleum products up to 50% aromatic content.

Tube

Black NBR rubber, oil resistant

Reinforcement

High strength synthetic cord, anti-static copper wire and steel helix wire

Cover

Black NBR / EPDM rubber, wrapped surface, weather & oil mist resistant

Temperature Range

-20°C to +70°C

Safety Factor

3:1

Product Code	Size	ID	OD	Working/Burst Pressure	Weight	Volume	Coil Length
	Inch	mm	mm				
OSH10-019	3/4	19.0	30.9	10/30	0.63	0.043	30/60
OSH10-022	7/8	22.0	33.9	10/30	0.74	0.047	30/60
OSH10-025	1	25.4	36.9	10/30	0.80	0.068	30/60
OSH10-028	1 1/8	28.0	39.0	10/30	1.03	0.090	30/60
OSH10-032	1 1/4	32.0	44.3	10/30	0.96	0.094	30/60
OSH10-035	1 3/8	35.0	47.3	10/30	1.15	0.120	30/60
OSH10-038	1 1/2	38.0	50.3	10/30	1.25	0.125	30/60
OSH10-041	1 5/8	41.0	53.0	10/30	1.48	0.176	30/60
OSH10-044	1 3/4	44.0	57.4	10/30	1.59	0.234	30/60
OSH10-050	2	51.0	63.4	10/30	1.84	0.252	30/60
OSH10-065	2 1/2	63.5	76.8	10/30	2.10	0.329	30/40
OSH10-075	3	76.0	91.2	10/30	3.08	0.507	30/40
OSH10-090	3 1/2	89.0	107.8	10/30	3.90	0.942	30/40
OSH10-100	4	102.0	118.0	10/30	4.86	0.992	30/40
OSH10-127	5	127.0	148.8	10/30	4.86	0.992	15/20
OSH10-150	6	152.4	174.0	10/30	9.36	2.642	15/20
OSH10-200	8	203.0	228.0	10/30	14.55	5.796	10/15

EUROPOWER

OIL SUCTION HOSE & DISCHARGE HOSE 20 BAR

EUROPOWER OIL SUCTION & DISCHARGE HOSE 20 BAR



Applications

Hardwall hose used for the suction and delivery of petroleum products up to 50% aromatic content.

Tube

Black NBR rubber, oil resistant

Reinforcement

High strength synthetic cord, anti-static copper wire and steel helix wire

Cover

Black NBR / EPDM rubber, wrapped surface, weather & oil mist resistant

Temperature Range

- 20°C to + 70°C

Safety Factor

3 : 1

Product Code	Size Inch	ID mm	OD mm	Working/Burst Pressure Bar	Weight Kg/Mt	Volume M ³	Coil Length Mt
OSH20-050	2	51.0	66.6	20/60	2.12	0.260	30/60
OSH20-065	2 1/2	63.5	80.0	20/60	2.87	0.342	30/40
OSH20-075	3	76.0	92.0	20/60	3.65	0.529	30/40
OSH20-100	4	102.0	123.8	20/60	5.66	1.080	30/40
OSH20-127	5	127.0	151.0	20/60	5.66	1.080	15/20
OSH20-150	6	152.4	178.4	20/60	10.14	2.673	15/20
OSH20-200	8	203.0	230.0	20/60	15.57	5.796	10/15

EUROPOWER

SAND BLAST HOSE 10 BAR



EUROPOWER SAND BLAST HOSE 10 BAR

Applications

Abrasion resistant softwall hose, used for the delivery of sand or cast steel shot. It is manufactured with an anti-static rubber compound.

Tube

Black, smooth, anti-static SBR / NR rubber, abrasion resistant

Reinforcement

High strength synthetic cord

Cover

Black, smooth, (wrapped finish) anti-static SBR / NR rubber, abrasion resistant

Temperature Range

-30°C to +70°C

Safety Factor

3:1

Product Code	Size	ID	OD	Working/Burst Pressure Bar	Weight Kg/Mt	Volume M ³	Coil Length Mt
	Inch	mm	mm				
SBH10-013	1/2	13.0	27.0	10/30	0.55	0.043	30
SBH10-019	3/4	19.0	38.0	10/30	1.06	0.076	30
SBH10-025	1	25.4	39.0	10/30	0.85	0.094	30
SBH10-032	1 1/4	32.0	48.0	10/30	1.26	0.145	40
SBH10-037	1 1/2	38.0	56.0	10/30	1.64	0.170	30
SBH10-038	1 1/2	38.0	60.0	10/30	2.10	0.249	40
SBH10-050	2	51.0	72.0	10/30	2.54	0.280	30
SBH10-065	2 1/2	63.5	84.0	10/30	2.90	0.421	30
SBH10-075	3	76.0	96.0	10/30	3.37	0.544	30
SBH10-100	4	102.0	122.0	10/30	4.39	1.040	30

EUROPOWER

PLASTER HOSE 40 BAR



EUROPOWER PLASTER HOSE 40 BAR

Applications

Softwall hose, used for the spraying of concrete, plaster, and gypsum.

Tube

Black, smooth, anti-static SBR / NR rubber, abrasion resistant

Reinforcement

High strength synthetic cord

Cover

Black, smooth, (wrapped finish) anti-static SBR / NR rubber, abrasion resistant

Temperature Range

- 30°C to + 70°C

Safety Factor

3 : 1

Product Code	Size Inch	ID mm	OD mm	Working/Burst Pressure Bar	Weight Kg/Mt	Volume M ³	Coil Length Mt
PH40-025	1	25.4	40.0	40/120	0.93	0.094	30/60
PH40-032	1 1/4	32.0	46.0	40/120	1.06	0.112	30/60
PH40-038	1 1/2	38.0	58.0	40/120	1.88	0.170	30/60
PH40-050	2	51.0	70.0	40/120	2.26	0.280	30/60



RIVALIT

A brand of the Semperit Group



manuli
HYDRAULICS



MINI CONTROL SYSTEM



WH WENTECH HYDRAULIC TRADING SDN BHD (435973-M)

AX HYDRAULIC SDN BHD (1094635-B)

LOT 29 & 29A, JALAN 4/32A,

BATU 6-1/2 OFF JALAN KEPONG, 52100 KUALA LUMPUR

PHONE: 603-6250 3388 FAX: 603-62575058 / 603-6258 3385 (A/C)

EMAIL: SALES@WHWENTECH.COM.MY